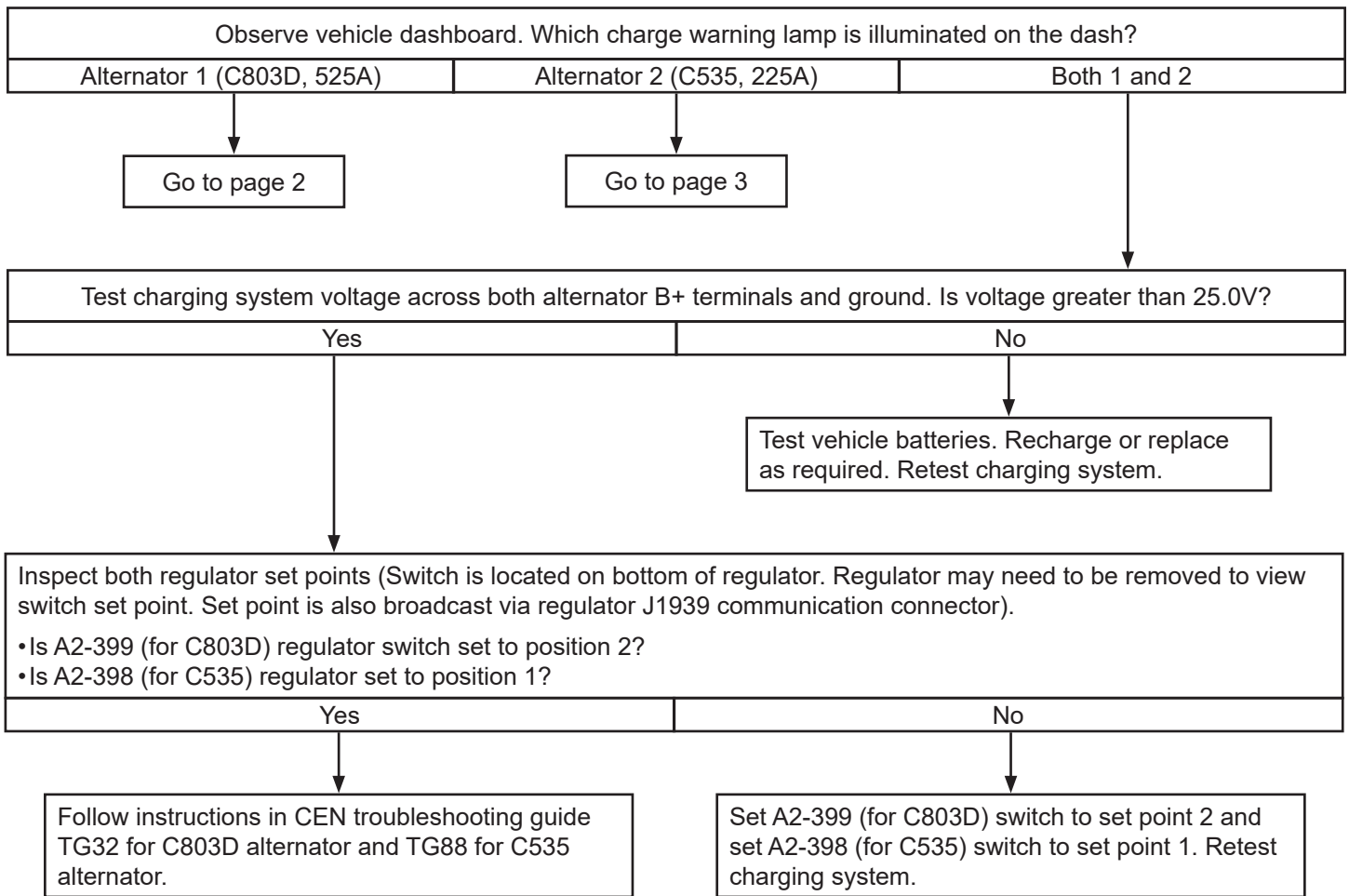


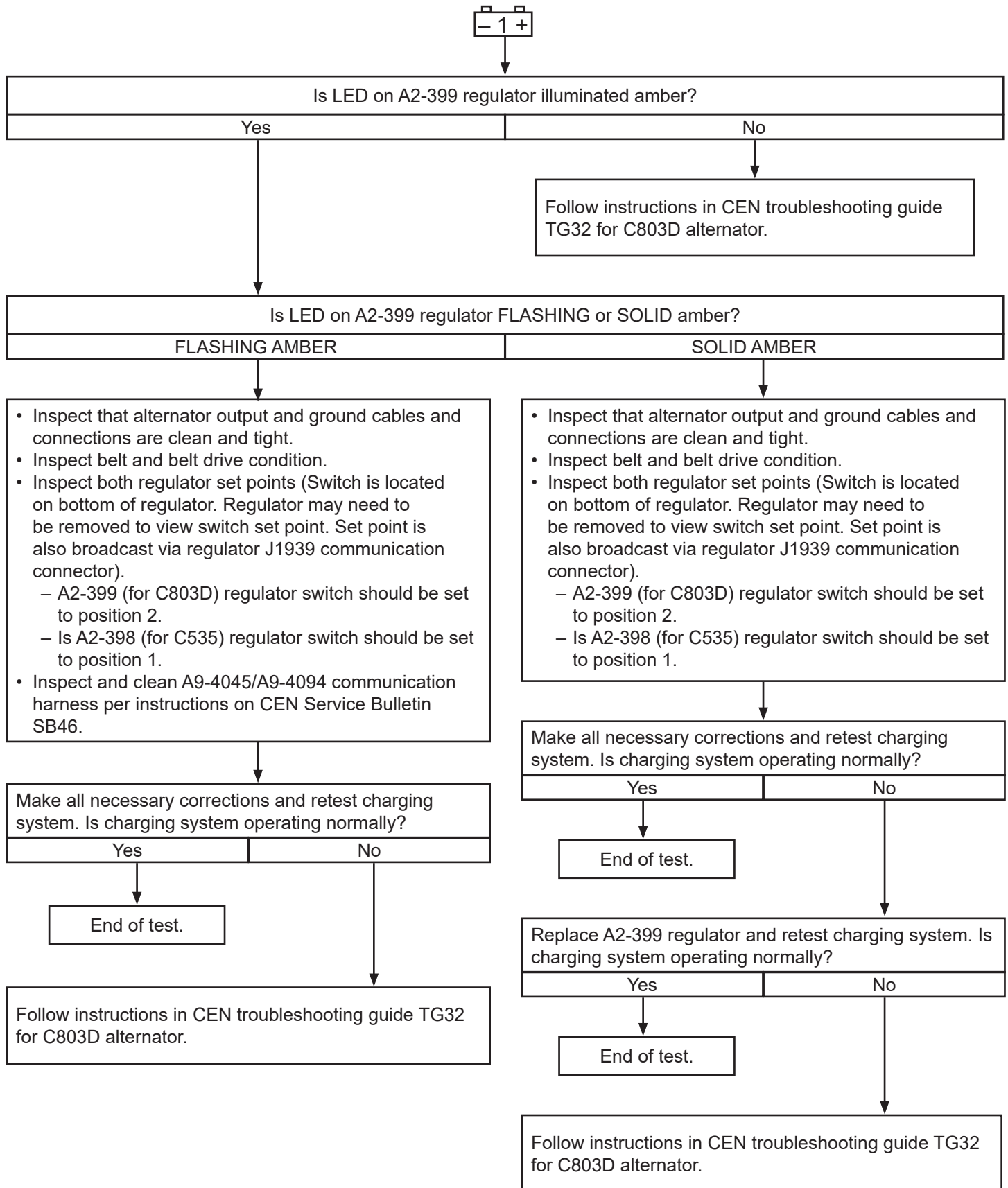


Troubleshooting C803D/C535 Alternators in Parallel Operation

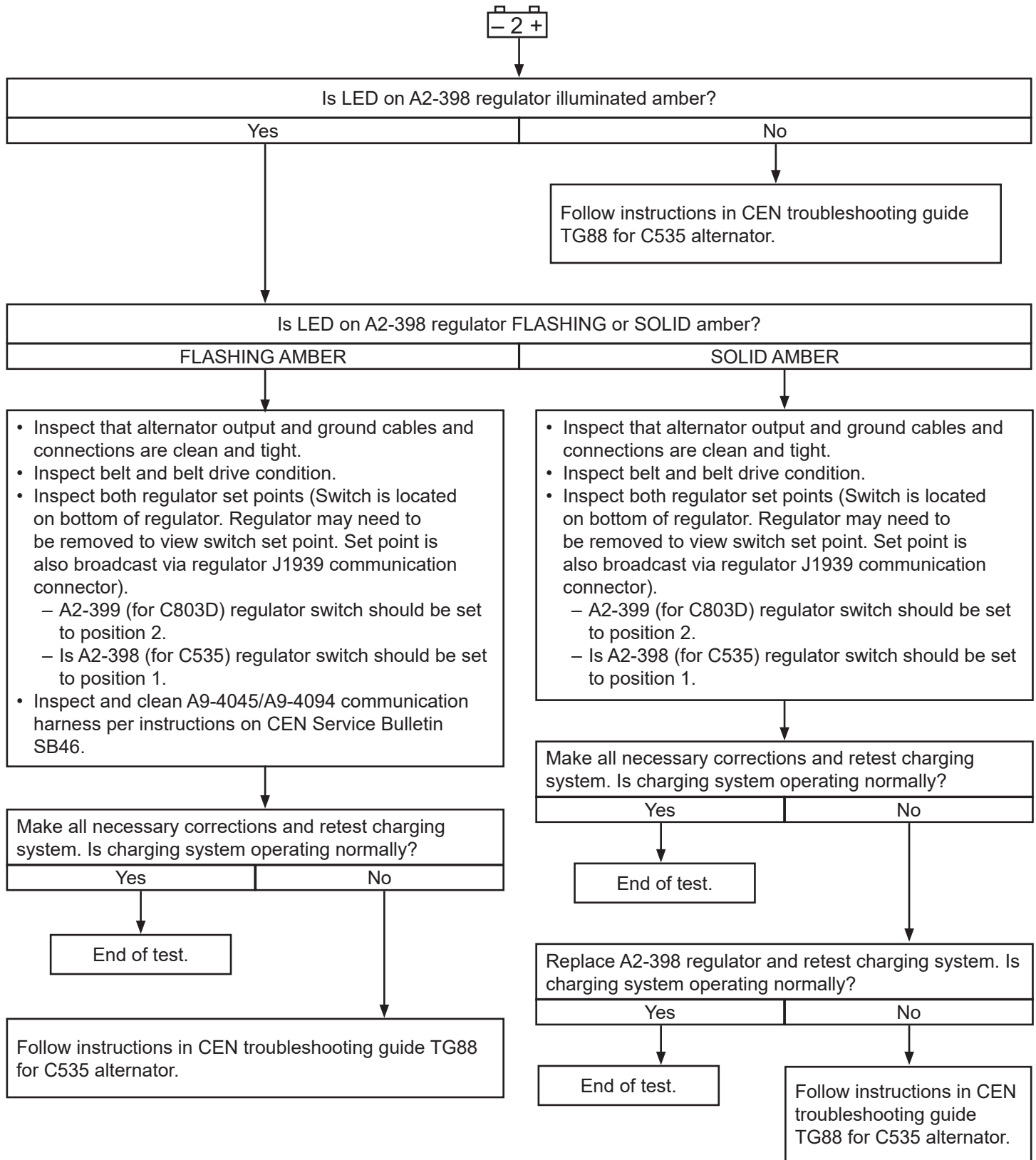
C803D and C535 alternators can be used in parallel for a combined maximum 750 amps output when used with compatible regulators and are interconnected with a J1939 communication harness. Follow instructions below to inspect and troubleshoot charging system issues if one or more charge warning lamps are illuminated during vehicle operation.



If only Charge Warning Lamp 1 (C803D, 525A) is illuminated on the dash:



If only Charge Warning Lamp 2 (C535, 225A) is illuminated on the dash:



If you have questions about your alternator or any of these instructions, or if you need to locate a Factory authorized Service Distributor, please contact us at:
 C. E. Niehoff & Co. • 2021 Lee Street • Evanston, IL 60202 USA
 TEL: 800.643.4633 USA and Canada • TEL: 847.866.6030 outside USA and Canada • FAX: 847.492.1242
 E-mail us at service@CENiehoff.com